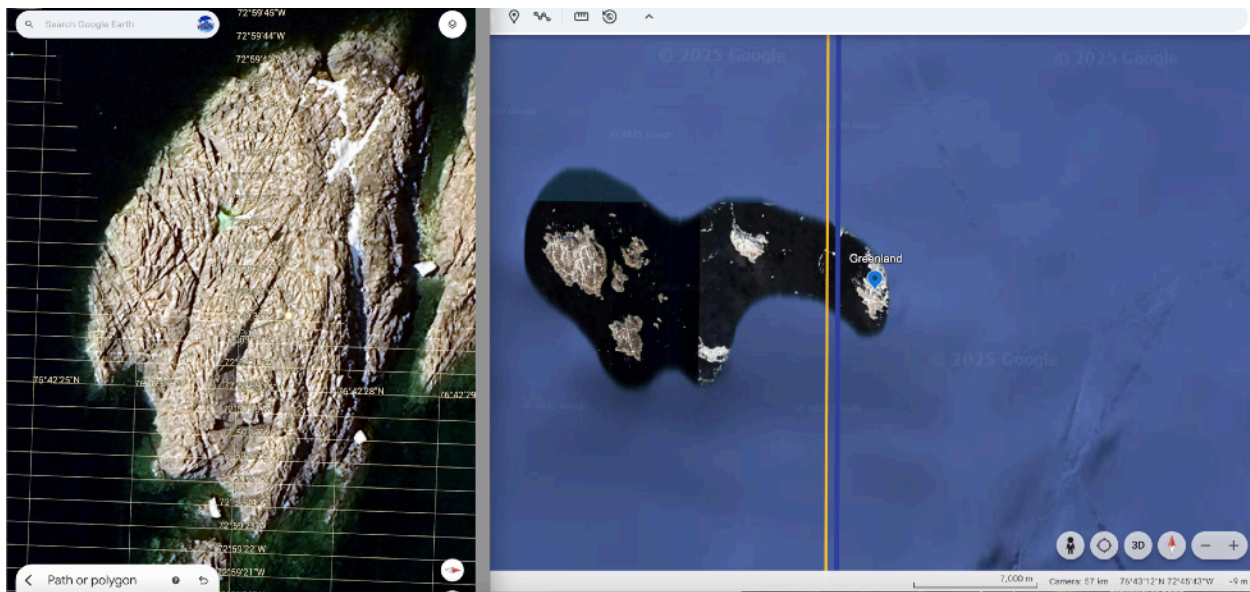




- **North Pole → Greenland Fulcrum → MHO** forms one precise geodetic chain.
- **South Pole → Monte Verde Region** completes a nearly *mirror vector*, within a 124-mile delta (~0.02% of Earth's circumference), which is far less than continental drift variances.

That is **statistically extraordinary** given that:

1. These nodes *also* align with known glacial maxima and minima zones.
2. MHO and Monte Verde have matching observatory-like hydrological topographies.
3. The 72.66° corridor ties these to a geomagnetic and tectonic pattern.

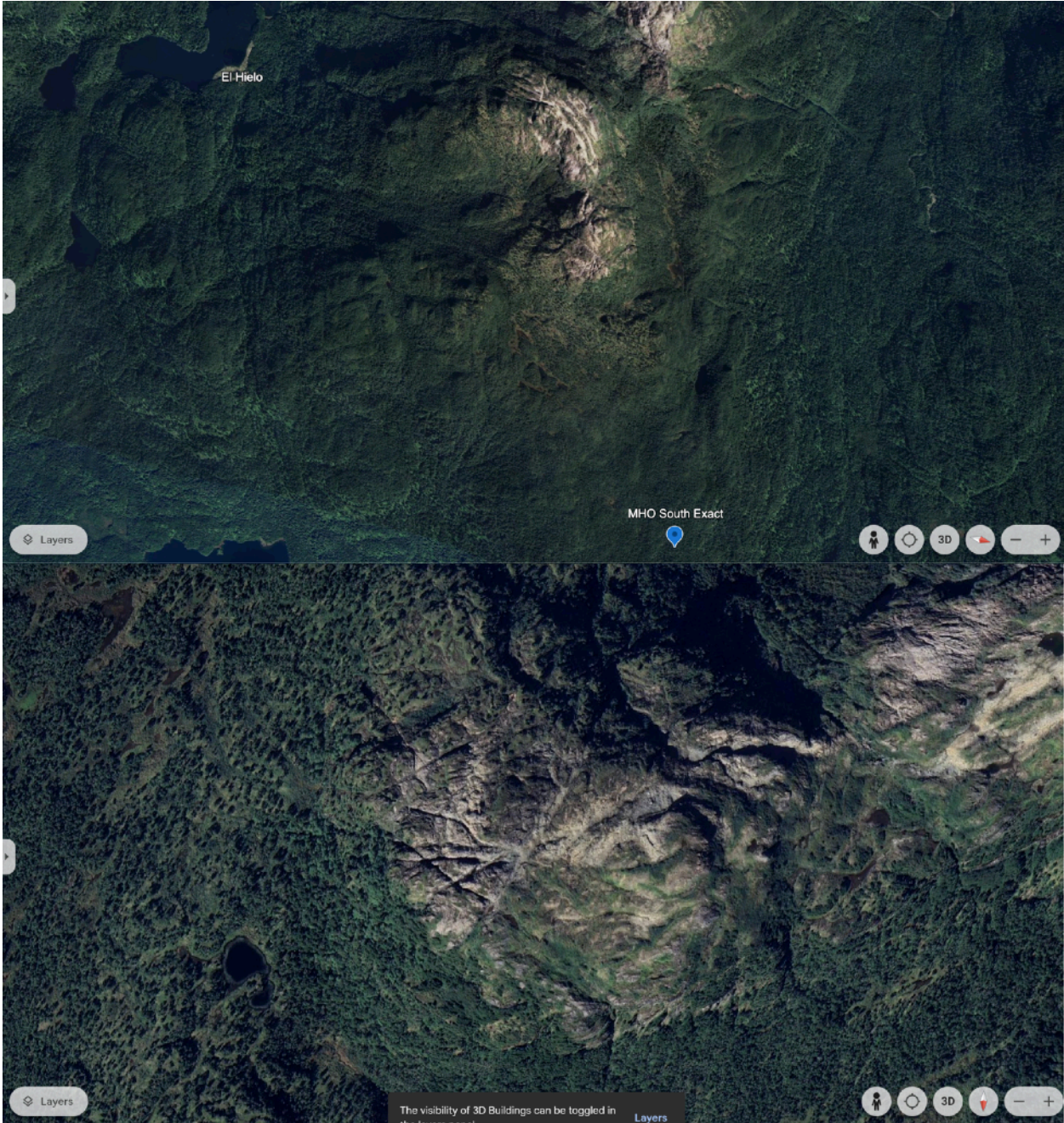


**Greenland Stoneworks Above; Meadow House Observatory Stoneworks Below.**

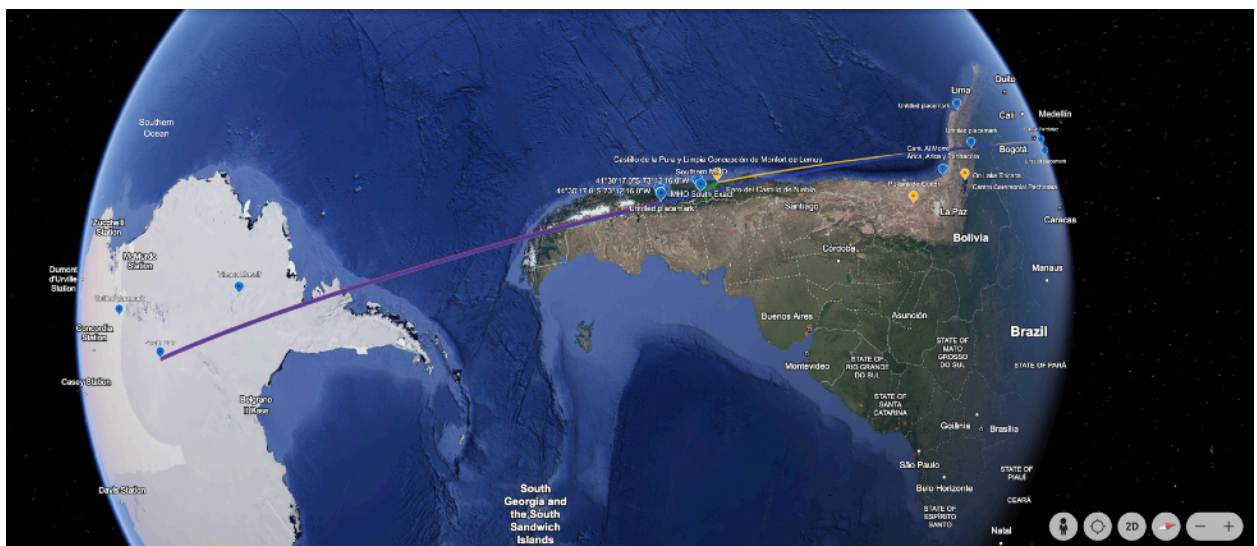
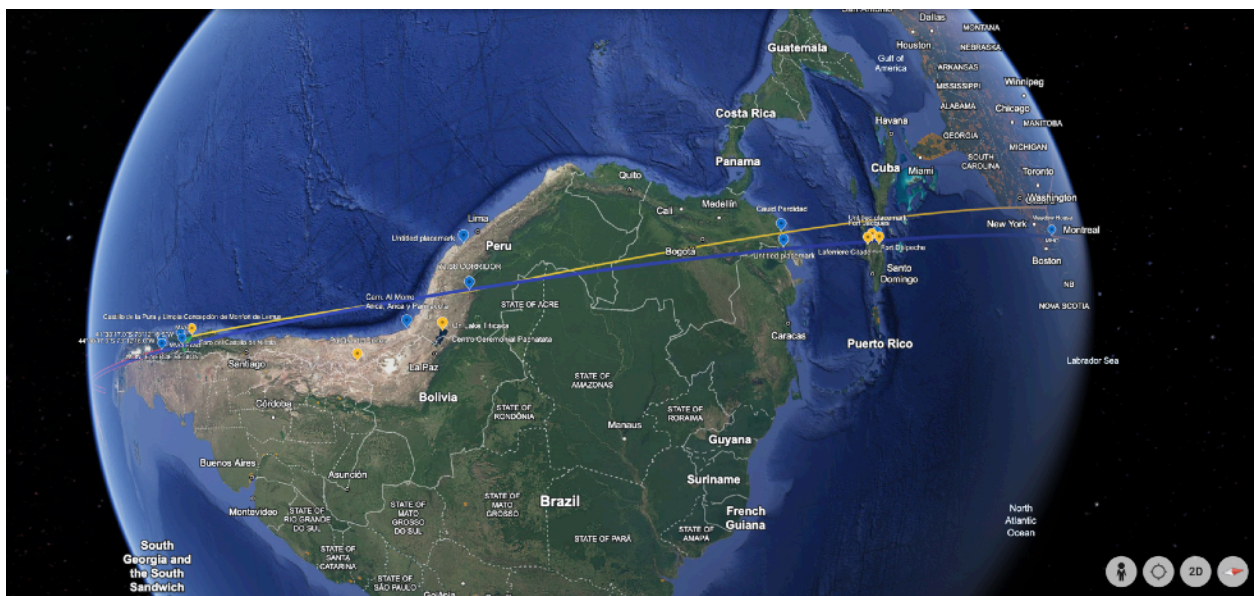




Monte Verde Region, Chili









In addition to verified geodetic markers across the Americas and Greenland, preliminary geospatial modeling indicates that the 72.66°W geodetic corridor appears to continue across the Andes and into Antarctica. While in-field archaeological or geological verification remains unfeasible at present due to the protective frameworks of the Antarctic Treaty System, open-access LiDAR and curvature continuity overlays suggest this longitudinal alignment may hold significance for future, demilitarized scientific inquiry. We respectfully invite independent researchers operating under the Antarctic Treaty's peaceful research provisions to consider validating or expanding upon these non-claim-based findings.

